

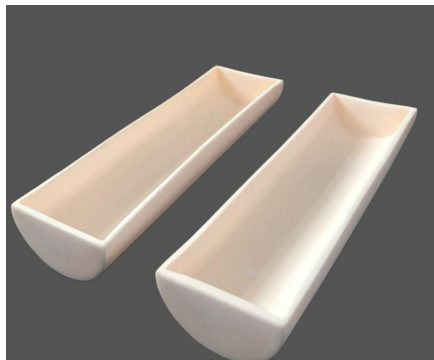


## Liling Ceramxpert Trading Co., Ltd.

Tel.: 0086-193 7331 0917 Web: [www.ceramxpert.com](http://www.ceramxpert.com)

Contact: Judy Li([Judy@ceramxpert.com](mailto:Judy@ceramxpert.com))

### Alumina Ceramic Crucible Boat with Semi-Circular Bottom



#### Size details:

| Item NO.    | Length (mm) | Width (mm) | Height (mm) |
|-------------|-------------|------------|-------------|
| CX-AL-21002 | 150         | 40         | 20          |
| CX-AL-21003 | 100         | 65         | 30          |
| CX-AL-21004 | 100         | 40         | 25          |
| CX-AL-21005 | 100         | 20         | 15          |
| CX-AL-21006 | 100         | 20         | 20          |
| CX-AL-21007 | 100         | 30         | 20          |
| CX-AL-21008 | 100         | 40         | 20          |
| CX-AL-21009 | 60          | 54         | 24          |
| CX-AL-21010 | 65          | 25         | 16          |
| CX-AL-21011 | 55          | 35         | 22          |
| CX-AL-21012 | 40          | 35         | 25          |
| CX-AL-21013 | 40          | 25         | 17          |
| CX-AL-21014 | 38          | 34         | 18          |
| CX-AL-21015 | 50          | 40         | 20          |
| CX-AL-21016 | 60          | 30         | 15          |
| CX-AL-21017 | 160         | 75         | 40          |
| CX-AL-21018 | 103         | 55         | 30          |
| CX-AL-21019 | 80          | 40         | 17          |
| CX-AL-21020 | 245         | 40         | 20          |
| CX-AL-21021 | 290         | 40         | 22          |
| CX-AL-21022 | 100         | 50         | 30          |
| CX-AL-21023 | 250         | 40         | 18          |
| CX-AL-21024 | 100         | 40         | 25          |
| CX-AL-21025 | 100         | 40         | 20          |
| CX-AL-21026 | 100         | 20         | 15          |
| CX-AL-21027 | 60          | 54         | 24          |
| CX-AL-21028 | 100         | 20         | 20          |
| CX-AL-21029 | 100         | 30         | 20          |
| CX-AL-21030 | 100         | 50         | 30          |

**Note: We can customize crucible dimensions upon request. The listed dimensions are for reference only.**

**Please contact us if you require tight tolerances.**

Judy Li ([Judy@ceramxpert.com](mailto:Judy@ceramxpert.com))

Mobile / WhatsApp / WeChat: 0086-19373310917

Website: [www.ceramxpert.com](http://www.ceramxpert.com)